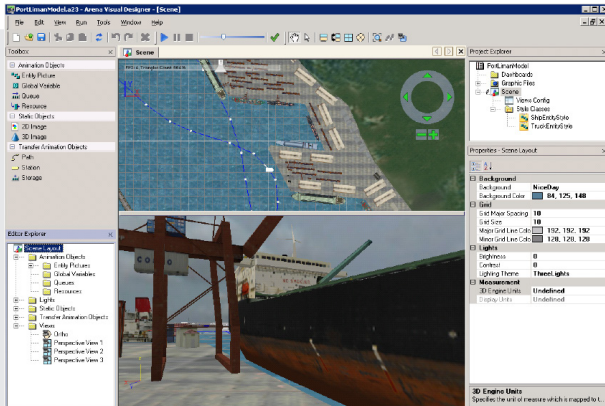


Arena® Simulation Software

Version 14.00.00 System Requirements

Arena®



Minimum System Requirements

- Arena® simulation software, version 14.00.00
- Adobe® Acrobat Reader 9.1.0 or later recommended to view documentation
- Hard drive with 1GB free disk space (or more)
- 2GB RAM (or more)
- Intel® dual-core processor (or more), 3GHz or faster

Recommended System Requirements

- Arena® simulation software, version 14.00.00
- Adobe® Acrobat Reader 9.1.0 or later recommended to view documentation
- Hard drive with 4GB free disk space (or more)
- 4GB RAM (or more)
- Intel® dual-core processor (or more), 3GHz or faster
- Internet access for installing FactoryTalk activations

Graphics Configuration

Applicable for the Arena Visual Designer tool in the Arena Basic Edition Plus, Standard Edition, Professional Edition and Enterprise Suite packages.

Minimum Requirements

Graphics card should have 512MB or more of dedicated DDR3 type or better memory. Below are example graphics cards that meet the minimum requirements:

- NVIDIA Quadro NVS 160M or better
- NVIDIA NVS 3100M or better
- NVIDIA Quadro PCI-E Series or better
- NVIDIA GeForce GTX 295 or better

Recommended Requirements

- Microsoft DirectX 9.0 and OpenGL 2.0 compatible
- Pixel and Vertex Shaders 2.0 compatible
- At least a 2GB GDDR5 (Graphics Double Data Rate, version 5) SGRAM; this is a high-performance graphics card. Any graphics card that can be used for extreme gaming will generally fit these criteria

Notes: The running and animation of Arena and some large simulation models can be calculation-intensive, so a faster processor with additional memory may result in significantly improved performance. In addition, a larger monitor and a screen resolution of at least 1024 x 768 are recommended for improved animation viewing.

Operating Systems

Arena is a Windows desktop application. We support the following operating systems:

- Microsoft® Windows® 7, Microsoft Windows Vista (SP2 or later), Microsoft Windows XP Pro or Home (32-bit SP3, 64-bit SP2)
- Microsoft Internet Explorer, version 6.0 or later. Version 7.0 is recommended for Microsoft Windows 7 and Vista operating systems
- Arena can be installed on x64 versions of Windows and will run as a 32-bit application

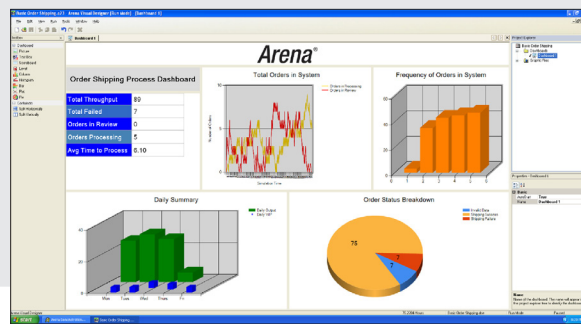
The Arena software can be run on single processor, multi processor, and multi-core processor computers; however, you can only run one instance of Arena at a time. The Arena Visual Designer tool will take advantage of multi-core capability to maintain graphic update speed.

You must have Administrative privileges to install the software. If you are using the Microsoft Windows Vista operating system, you must also have Administrative privileges to run the software.

More Information

Contact the U.S. Rockwell Automation office at (1+) 724.741.4000 for more information about Arena software or contact your local Arena reseller, listed on the web at www.ArenaSimulation.com.

www.ArenaSimulation.com



Allen-Bradley • Rockwell Software

Rockwell Automation